

One Stop Destination

Projects

Purchase sales

Turnkey Demand

USA

UK

CHINA

Industrial

Commercial

Home appliances

Import

Export

Manufacturing



House of
Global Venture Impex
采购 | 销售 | 制造商



A 18, 5TH FL, AJANTA COMPLEX, NR. INCOME TAX, ASHRAM ROAD, AHMEDABAD 380014.
www.globalventure.hpge.com | +91 9033817316 | yoga24in@hotmail.com

4D Laptop Color Doppler 4,45,000/- INR CIFL India.



Packaging & Delivery

Packaging Detail: 1 tailor-made bag/1pc.

Delivery Detail: Within 1 week after confirmation of the order.

Specifications

ultrasound price is cheap
10.1" LED screen; easy to operate and carry;
applicable for people and animals;

Description

Introduction

This ultrasound diagnostic apparatus adopt the latest techniques to realize a crystal clear, stable and high resolution imaging function. Laptop design makes it easier to carry and operate. And it can be used for examination and diagnosis of abdominal (Transvaginal) organs, and other small parts with different probe. It is applicable for both people and animals.

Specification

Technical Specification

Screen	High resolution LED screen
Weight	1.5 kg
Probe connectors	1
Display Mode	B BB BM M 4B
Scanning Methods	Convex Linear
Scanning speed	2s, 4s, 6s, 8s are provided in the mode of M or BM mode
Image processing	Multi-level magnification Depth upgrade Zoom and scroll control 3-segment TGC adjustment 256 gray scale Frame correlation and line correlation Up/down, left/right, black/white reversing Edge enhancement Dynamic filtering

Image output	Wide dynamic range
	Total gain, brightness, contrast, and angle adjustment
Cine Loop	USB disk or SD card
	USB 2.0 interface ensures real-time image transfer to PC
Permanent image storage	256 frames , playback selectable
	1024 frames in flash memory
measurement	Distance, perimeter, area, volume, angle
	Heart rate
Body marks	Pregnant week, fetal weight etc.
	40
Note	Hospital information
	Patient information
	Date, Time
	Image annotations etc.
Pseudo color processor available	
Supporting USB mouse action	
Printing function.	
Power save mode.	

Probe Specification

Frequency	3.5 MHz±15 %	3.5 MHz±15 %	6.5MHz±15 %	7.5MHz±15 %
Probe type	R= 60mm convex	R= 20mm convex	R=13mm convex	L=40mm linear
Scanning depth	160	140	40	50
Axial resolution, mm	3	3	2	2
Radial resolution, mm	(Depth 80)	(Depth 80)	(Depth 30)	(Depth 40)
	4	4		
	(80< Depth 130)	(80< Depth 130)		
	2	2	1	1
	(Depth 80)	(Depth 80)	(Depth 40)	(Depth 50)
	3			
	(80< Depth			

Blind zone, mm	130)			
	5	7	4	3
	15(Radial)	20(Radial)	10(Radial)	10(Radial)
Geometric positioning accuracy , %	10(Axial)	10(Axial)	5(Axial)	5(Axial)

Standard Configuration

Monitor	1pc
3.5MHz R60 convex probe	1pc
(Abdominal organs)	

Options

Probe Type	Application
6.5MHz R13 Micro-convex Probe	Transvaginal
7.5MHz L40 Linear Probe	Small parts
3.5MHz R20 Micro-convex Probe	Cardiac
5.0MHz R20 Micro-convex Probe	Cardiac

Power information

Power supply	AC 100~240V, 50/60Hz;
	Rechargeable lithium battery, one full charge can work for 2 hours.
Power consumption	50VA

Requirements for environment

	Operation	Preservation	Transportation
Temperature	5°C~ 40°C	-5°C~40°C	-30°C~55°C

Humidity	30%~80%,	< 80%,	95%,
Atmospheric pressure	no condensation 86kPa~ 106kPa	no condensation 86kPa~ 106kPa	no condensation 50kPa~ 106kPa

Overview

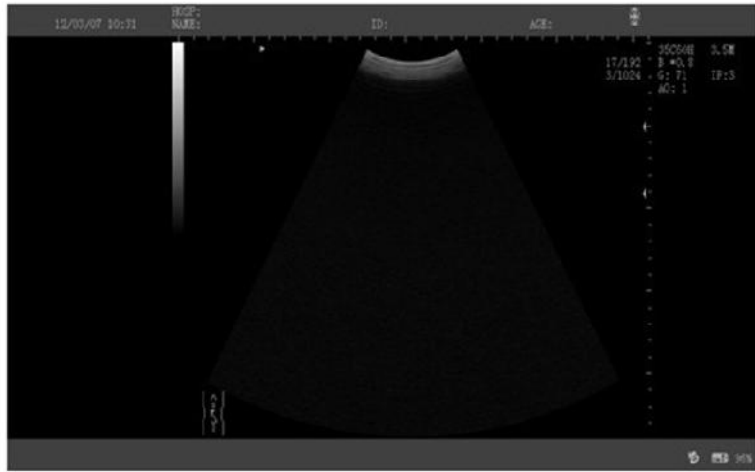
Product Show



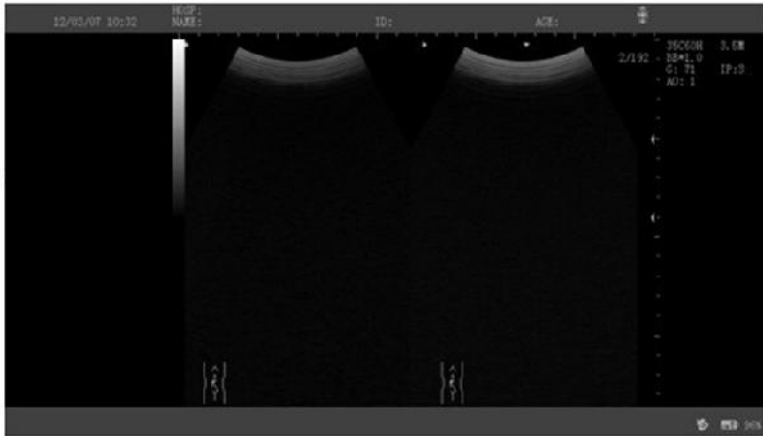


Image display

B Mode display



2B Mode Display



M Mode Display



BM Mode Display

